

Light Line

Truck-mixer

Light Line



Nominal volume	7 - 10 m ³
Geom. drum volume	12,710 - 17,040 l
Water line	8,150 - 11,400 l
Weight of mixer	3,200 - 3,550 kg



RECORD BREAKING ENGINEERING

The Light Line from Stetter

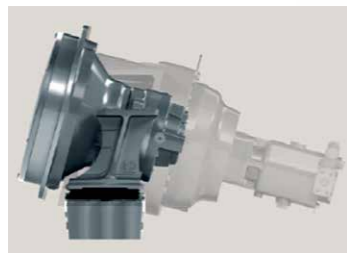
The benchmark for light-weight truck-mixers

The Light Line range of truck mixers offers an extremely low body weight thanks to a comprehensive redesign. The advantage is a higher turnover due to higher payload capacity. And you don't have to do without anything - especially not the usual high robustness and long service life of a Stetter truck mixer. The combination of high transport revenues and low maintenance costs leads to outstanding operating efficiency. The UltraEco, the lightest 9 m³ truck mixer body in the world, offers an even greater payload capacity. Thanks to additional weight optimisation measures, it enables the safe transport of 8 m³ of fresh concrete at 32 t permissible total weight of the truck mixer. Stetter's Light Line range: Guaranteeing maximum efficiency in concrete transport.

Light Line Truck-mixer



Guaranteed reliability
Stetter's standard 5-year warranty against premature wear on the mixing drum and mixing spirals provides security when it comes to wear costs (please note the conditions on page 6).



Truck-mixer gear

The Ecomix II CML truck-mixer gear from ZF is significantly lighter than conventional mixer drives. Thanks to the longlife gear oil which rarely needs changing it requires very little maintenance as well. Its robustness and powerful elastomeric bearing makes it suitable for use even at the harshest of construction sites.

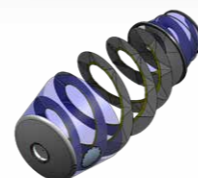


Hardness against wear

Harder than concrete: the mixing drum of the Light Line is made of high-strength Hardox 400, whilst the mixing spirals and edge protection of Hardox 500. Maximum hardness for minimum wear.

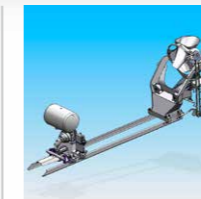
No stress

Before being welded into the mixing drum, the mixing spirals are precisely curved so as to follow the contour of the mixing drum even before they are installed. The shaped mixing spirals can then be installed and welded with virtually no tension. This patented procedure relieves stress on the welding seams and extends the lifetime of the mixing spirals.



Strong base

The frame of the truck-mixer is manufactured from high-quality S 500 MC steel. Together with the intelligent design, that allows weight to be reduced significantly while at the same time retaining high stability and robustness.



Even lighter on request

More payload as standard: the weight-optimised under ride protection on the rear, the plastic extension chute and the aluminium fender reduce the weight of the UltraEco right out of the factory. The payload can be increased even further upon request with an aluminium water tank and aluminium ladder.



Light Line Truck-mixer

Options



Plasticiser system 60 l (compressed air)



Ladder platform with step and railing elevation



Retainer flap swivel chute



LED work lights below the ladder pedestal



LED auxiliary headlights at the rear (2 pieces)



Hydraulically tilted filling hopper (allows highpressure cleaning of the mixing drum)



Storage box, lockable



Drum cover (3/4 or full lock)



Reversing camera

More options

Aluminium compressed air tank (300 l / 400 l)

Gravity plasticiser, 42 l

Electronic truck mixer control unit SMART Control 3.0

Bracket for liquid concrete pipe (5 m long)

Fender enlargement

Base frame coverage

Discharge protection for the swivel chute

Transition piece to the flowing concrete pipe

Standard equipment

ZF Ecomix II CML mixer gearbox

Mechanical mixer operation (option: SMART Control 3.0)

Compressed air water system

Spraying hose on the stand (2 m)

Spraying hose on the rear of the machine (10 m)

Mixing drum and mixing coils made of Hardox

SMART 3.0 – The intelligent mixer control

The convenient and easy to use mixer control Smart control (option) provides a constantly low drum speed (Constant speed drive) – regardless of the speed of the truck mixer. By avoiding unnecessary drum revolutions, drum wear and fuel consumption are noticeably reduced and revenue per tour increases. Typical processes such as loading and filling of concrete buckets are simplified and sources of error minimized, meaning greater economy and faster operation.



Rear module



Driver's cab module

Features

- Stepless, ergonomic single-lever operation
- Memory function integrated in the operating lever (accessing of the last stored rotational speed; e.g. makes it easier to fill concrete buckets)
- Two freely selectable drum rotation speeds (constant speed drive) can be called up at the touch of a button (e.g. for loading and unloading, addition of plasticiser etc.)
- Start-stop function for the diesel engine
- The control of optional hydraulic functions (drum cover, chute adjustment)
- Switching the optional LED worklights on and off

Advantages

- Lower operating costs due to reduced fuel consumption
- Lower service costs due to reduced wear of the mixing drum
- Low noise emissions

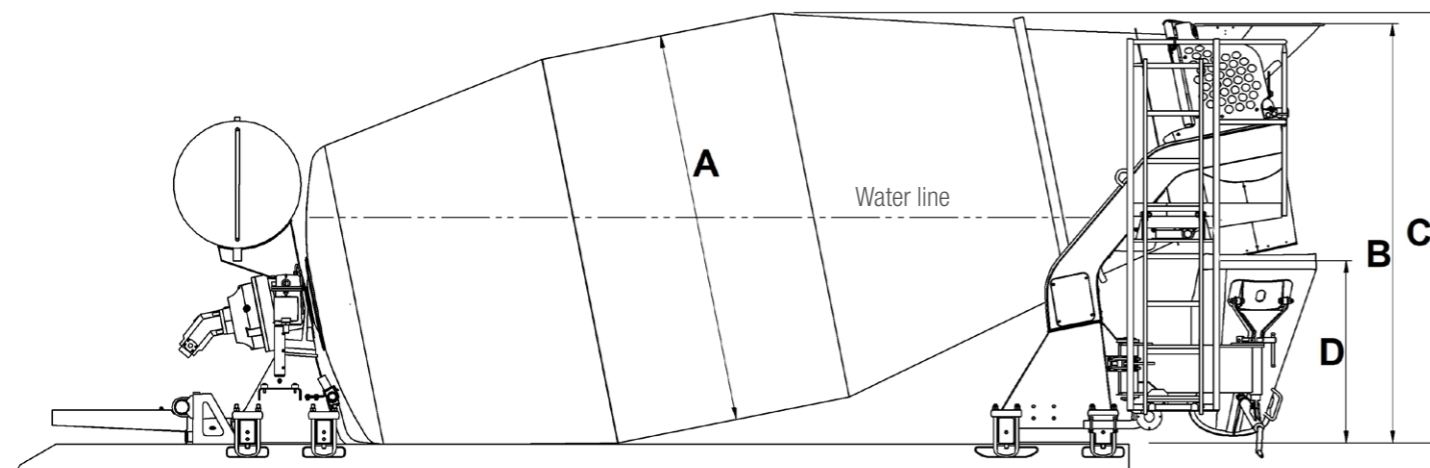
Technical Data

Mixer type		AM 7 C	AM 8 C	AM 9 C	AM 9 C UltraEco	AM 10 C
Nominal volume	m ³	7	8	9	9	10
Geom. drum volume	l	12,710	14,120	15,810	15,000	17,040
Water line	l	8,150	9,340	10,390	10,200	11,400
Fill ratio	%	55.1	56.7	56.9	60.0	58.7
Drum inclination	deg.	12.45	12.45	11.20	12.45	11.20
Drum speed	rpm	0 - 12/14	0 - 12/14	0 - 12/14	0-12/14	0-12/14
Drum diameter	A mm	2,300	2,300	2,300	2,300	2,300
Mixer weight*	kg	3,200	3,370	3,470	3,250	3,550
Height of feed hopper**	B mm	2,425	2,499	2,474	2,546	2,532
Clearance height**	C mm	2,426	2,503	2,534	2,546	2,592
Discharge tray transfer height**	D mm	1,027	1,101	1,089	1,145	1,147
Warranty***	years	5	5	5	5	5

*Weight specifications when completely assembled / ready for operation according to DIN 70020, deviation +/- 5 %

**without base frame

***covering premature wear on the mixing drum and the mixing spirals when using the truck-mixer in connection with precast concrete plants, for single-shift operations when transporting concrete in the amount of up to 8,000 m³/year, and when conducting a free annual inspection of the mixing drum at a SCHWING-Stetter service centre

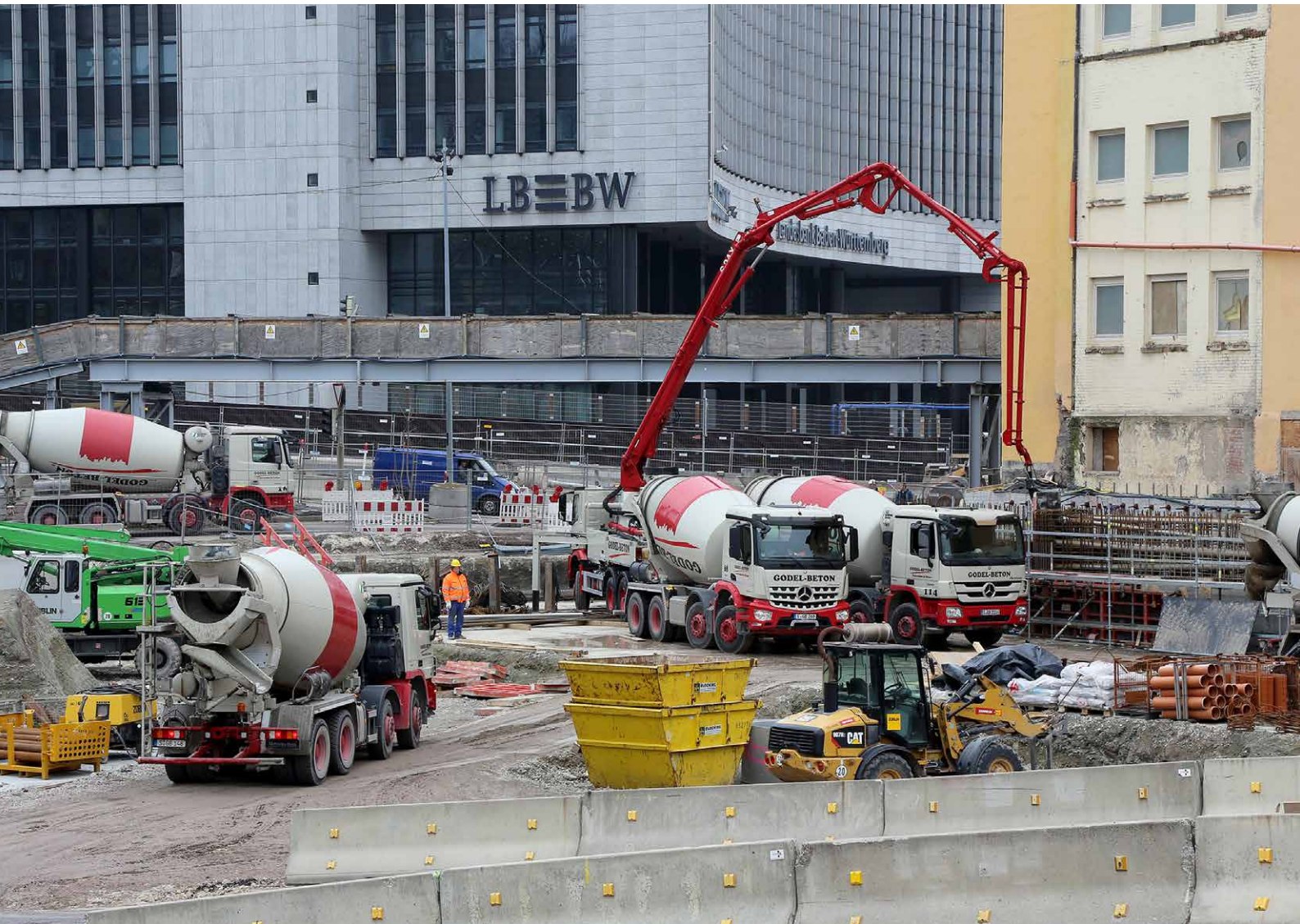




schwing-stetter



schwing.stetter



Stetter truck-mixers.
The benchmark for efficiency.



**SCHWING
Stetter**

SCHWING GmbH
Heerstrasse 9-27 · 44653 Herne, Germany
Phone +49 23 25 - 987-0 · Fax +49 23 25 - 72922
www.schwing-stetter.com · info@schwing.de

Stetter GmbH
Dr.-Karl-Lenz-Strasse 70 · 87700 Memmingen, Germany
Phone +49 83 31 - 78-0 · Fax +49 83 31 - 78 275
www.schwing-stetter.com · info@stetter.de

Subject to technical and dimensional modifications. Illustrations are non-binding. The exact standard specification, the scope of delivery and the technical data are detailed in the offer.